

Human Motion Control Laboratory

Research:

- Musculoskeletal Control of Spine Motion
 - Low Back Pain and Scoliosis
- Occupational Vibration Exposure
- fMRI Imaging of Sensory Adaptation
- Medical Device Design and Testing

Collaborating Faculty:

Sarah Kieweg, Ph.D., Elizabeth Friis, Ph.D. (KU)
Carl Weiner, M.D., Stephen Waller, M.D.,
Neena Sharma, PhD (KUMC)



Equipment:

Electromyography, electrooculography; Optotrak motion tracking, Trakstar electromagnetic motion tracking; Accelerometers; Electrogoniometers; Force plate; Shaker table; Specialty vibration devices

Funding Sources:

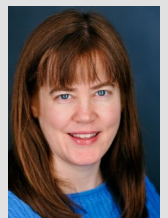
NIOSH, NIH, Industry



Director:

Sara Wilson, Ph.D.
(M.I.T. 1999)

Associate Professor,
Mechanical Engineering



sewilson@ku.edu

Courses:

Biomechanical Systems
Physiological Systems
Advanced Control Systems

Go to www.bio.engr.ku.edu to learn more.